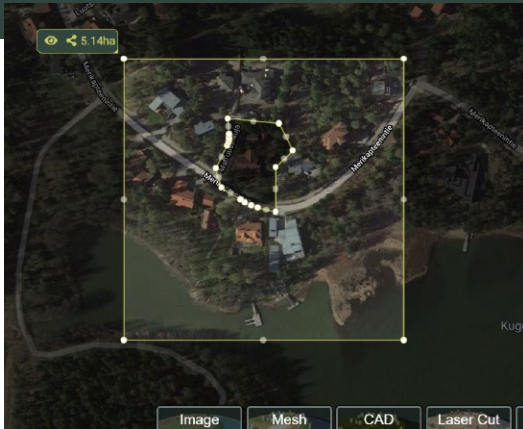
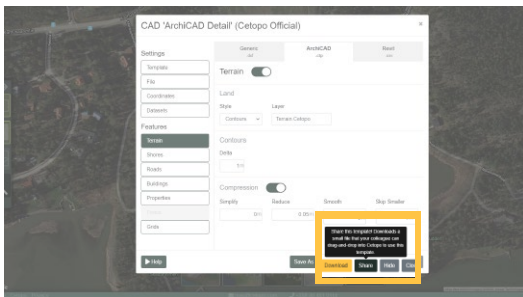
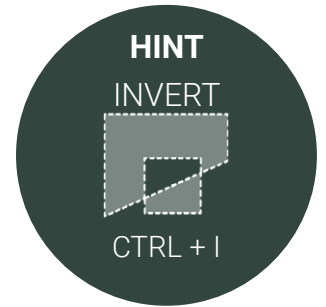


Some more tips and tricks to help you optimise your workflow with Cetopo and Archicad



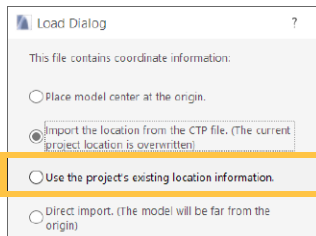
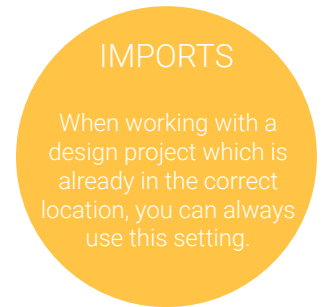
## TIP ONE: MULTIACCURACY

For larger area models, multiaccuracy models can keep the model light and quick to use. Using a selection with a hole around your site, download using the 'Archicad Rough' template. Then, invert your selection and download using 'Archicad detail'.



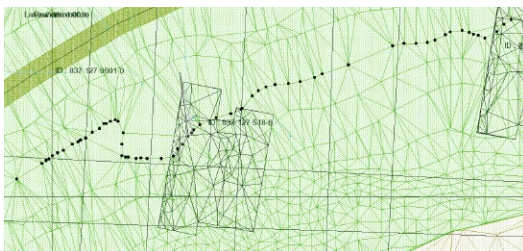
## TIP TWO: TEMPLATE EDITS

Templates can be customised to suit your needs, and allow you lots of control over the detail, and which information is included in your model. Using the 'share' button, you can download a template file to share with your colleagues.



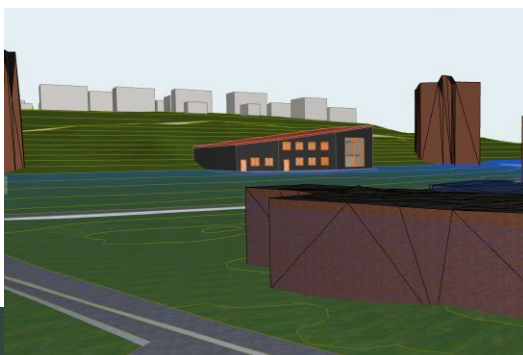
## TIP THREE: IMPORT SETTINGS

When importing the second of your models, select 'use the projects existing location information' to make sure your models align correctly.



## TIP FOUR: EDITING MODELS

To edit contours, you can either click and drag a whole contour, or move individual points. You can also select and delete any element of the model you don't want.



## TIP FOUR: YOUR DESIGN

You will need to alter your storey heights (Ctrl+L) to set your First Floor level to the actual height on your Cetopo Model. If importing a model check that you are using the same coordinate systems.